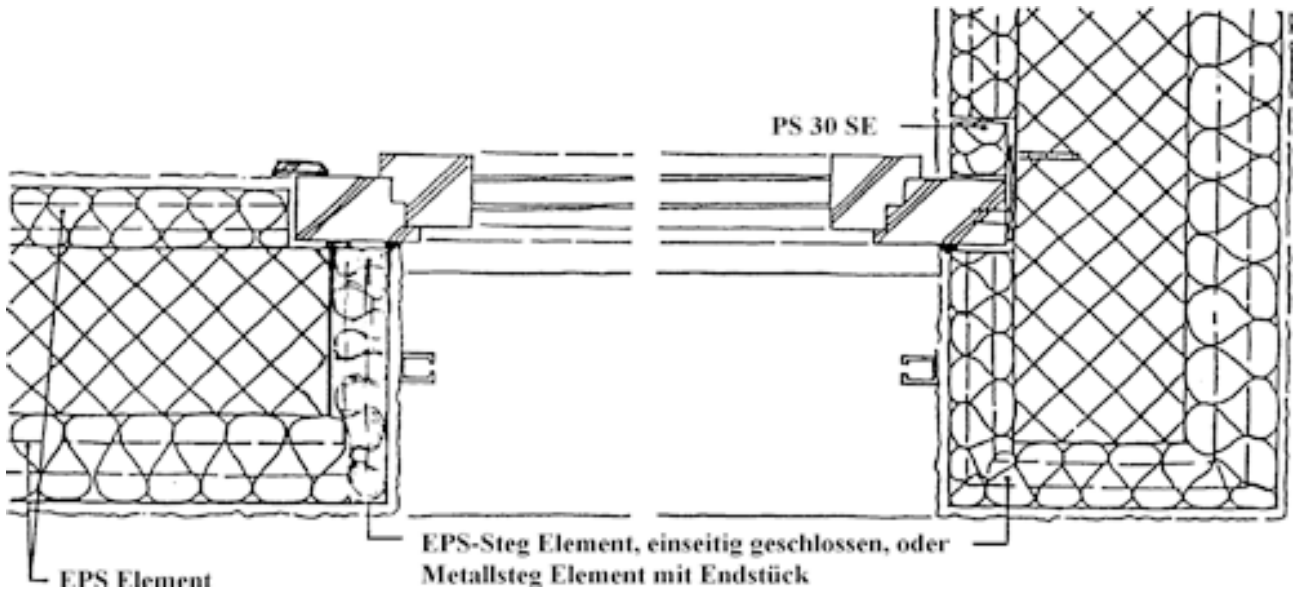
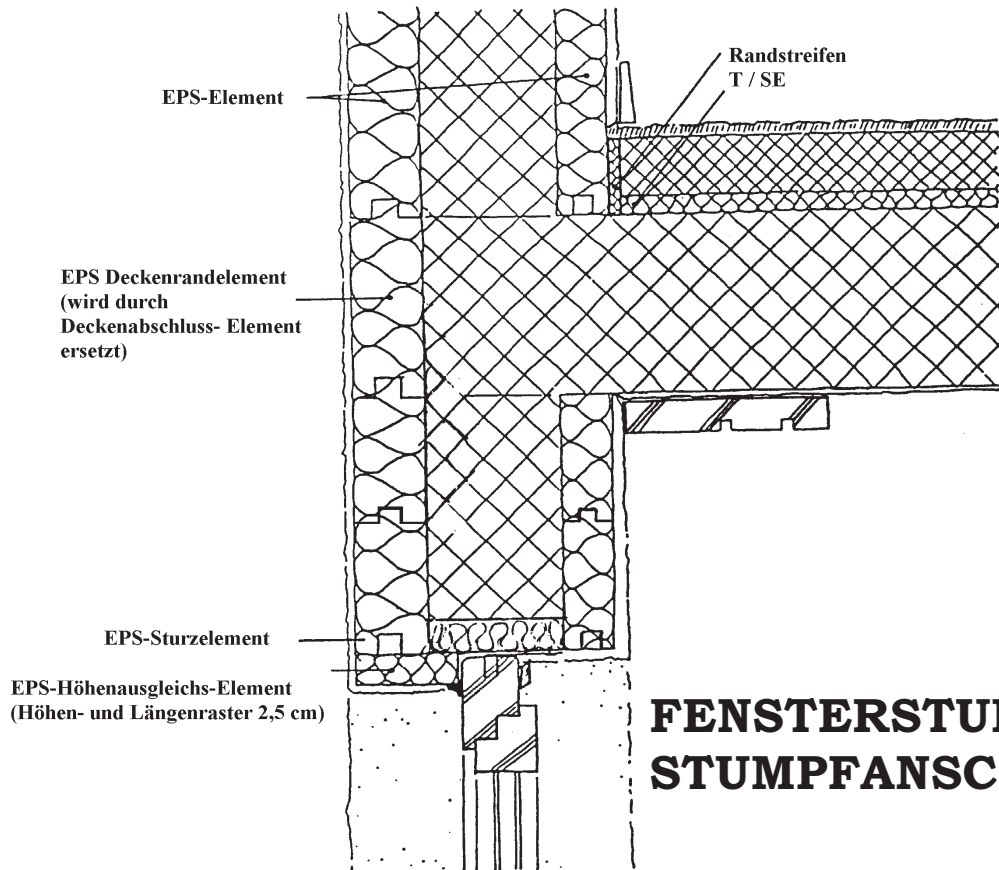


# STYREO STONE®



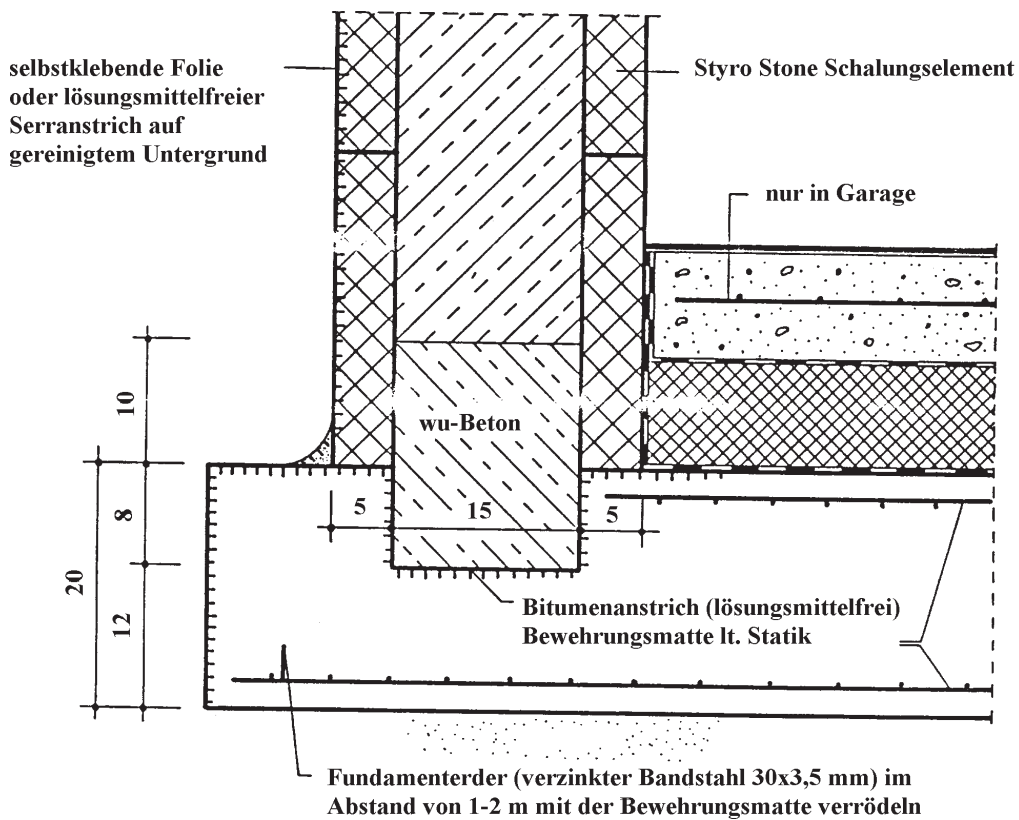
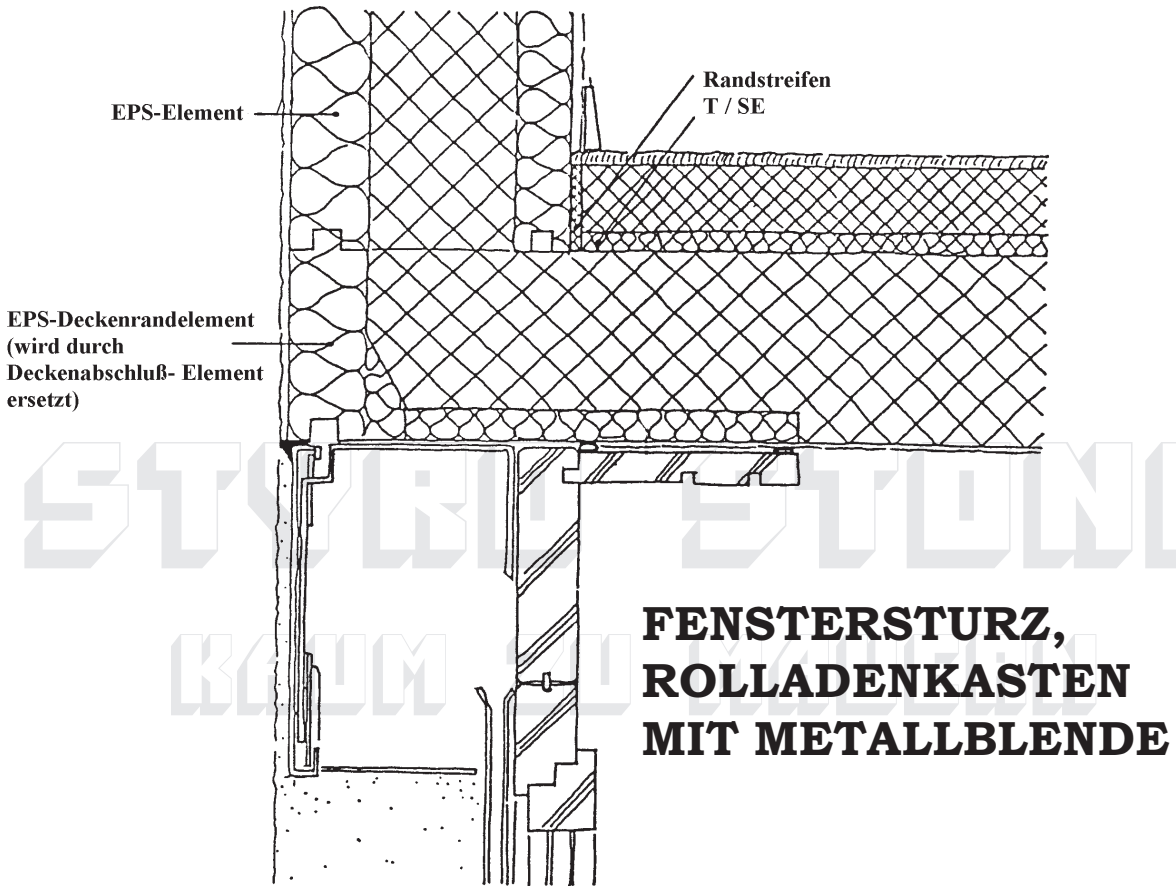
**KAUM ZU MAUERN**

## FENSTERANSCHLAG STUMPF, GEBÄUDEAUSSENECK



## FENSTERSTURZ STUMPFANSCHLAG

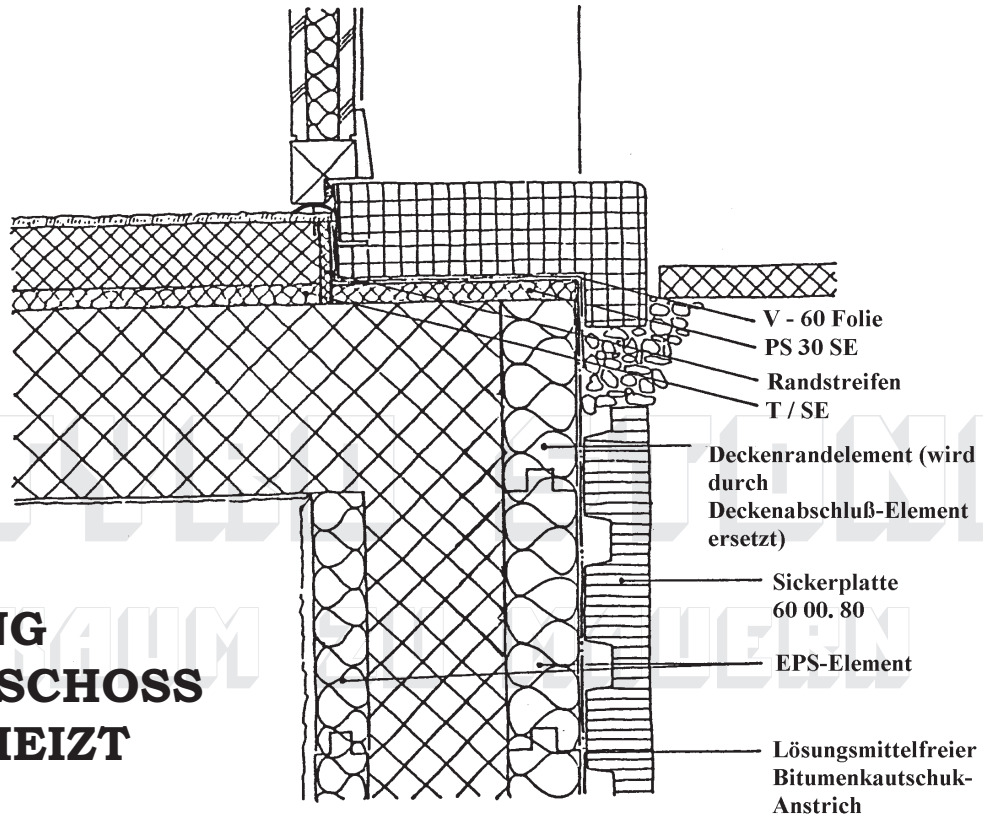
# STYRO STONE®



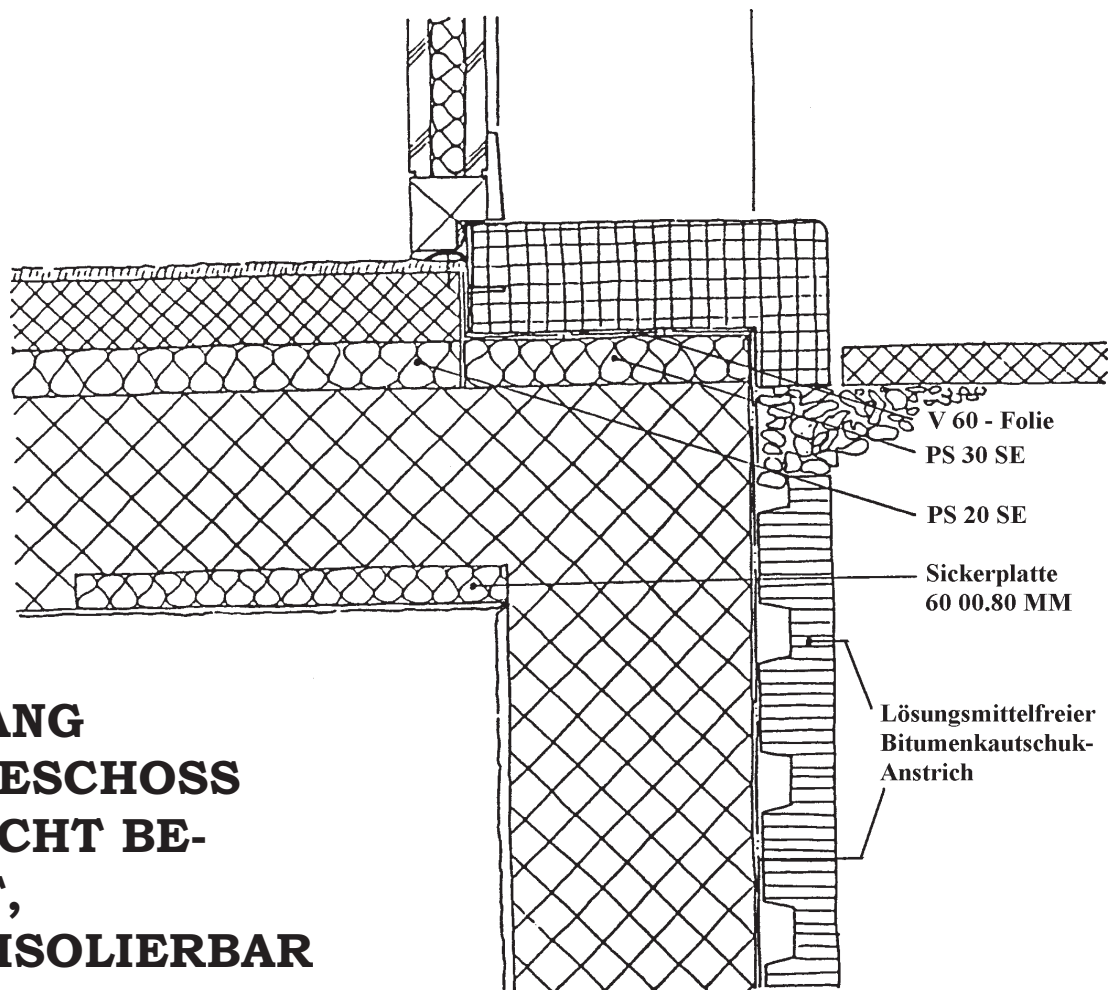
## ANSCHLUß BODEN-PLATTE - WAND

# STYRENE STONE®

**EINGANG  
ERDGESCHOSS  
KG BEHEIZT**

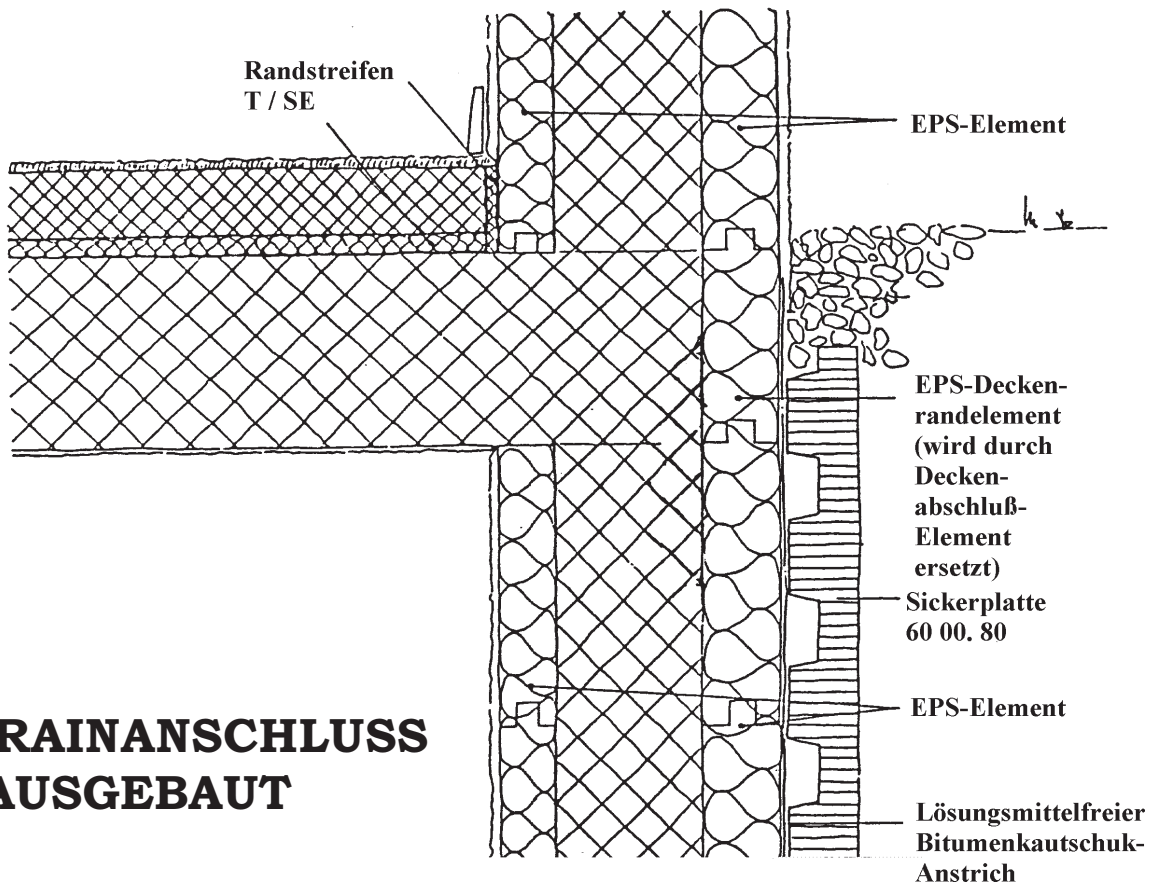
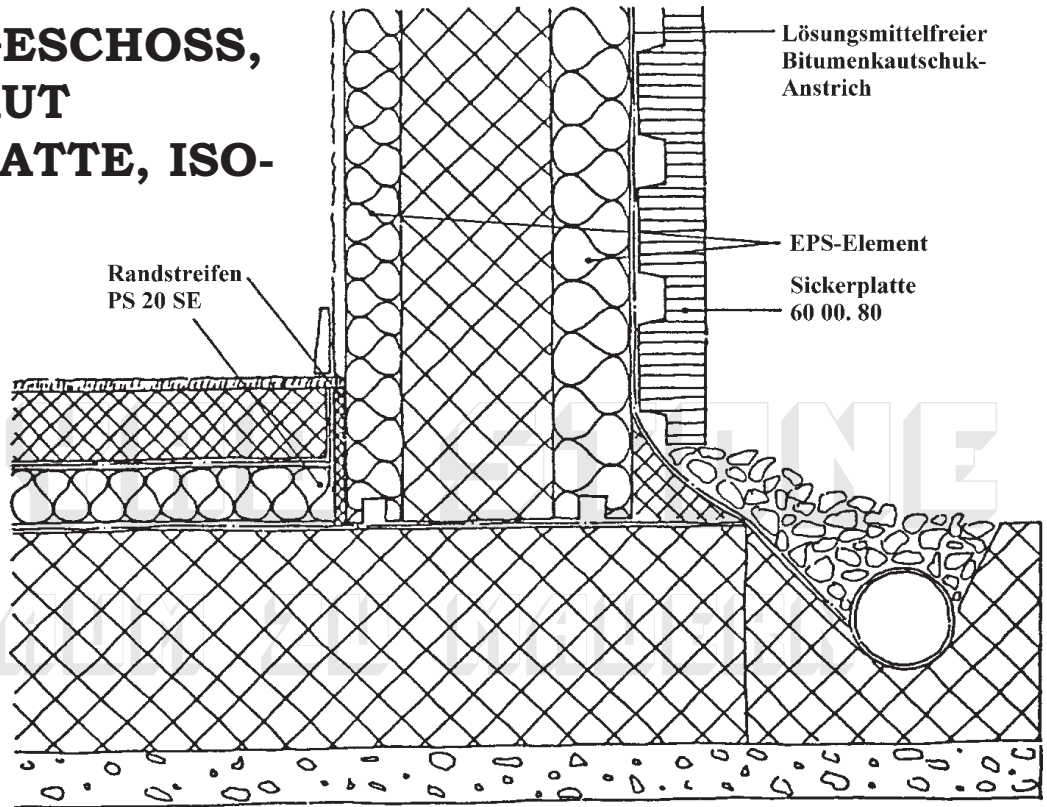


**EINGANG  
ERDGESCHOSS  
KG NICHT BE-  
HEIZT,  
NACHISOLIERBAR**



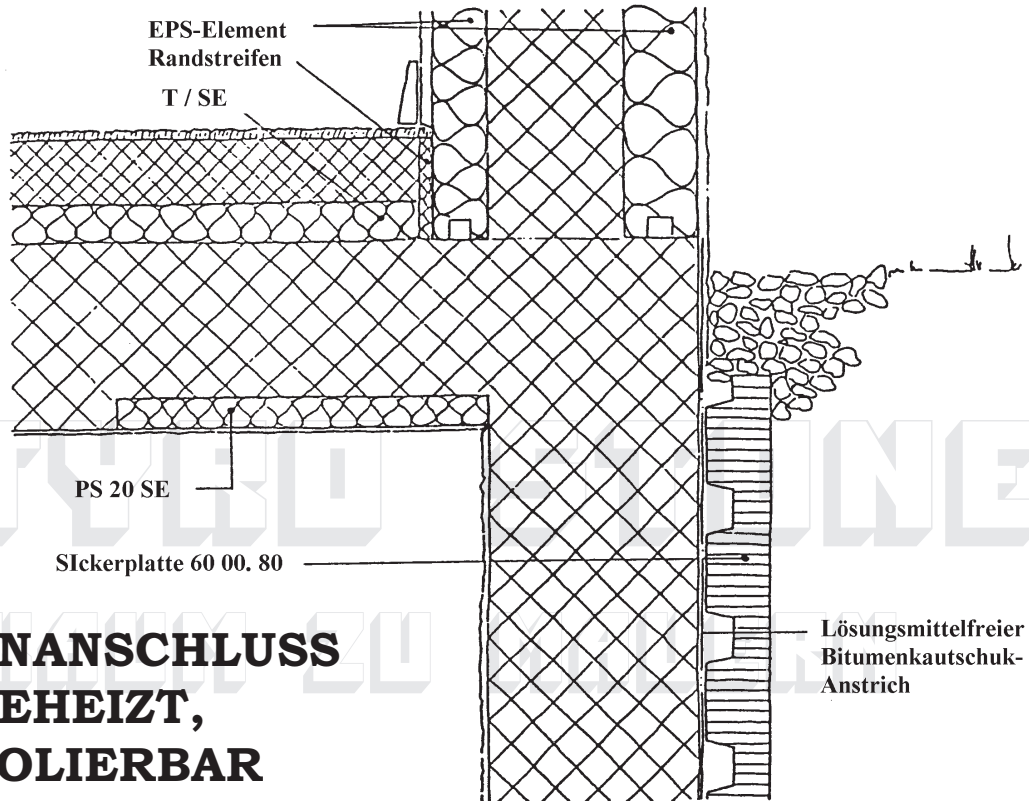
# STYREX STONE®

## KELLERGESCHOSS, AUSGEBAUT BODENPLATTE, ISO- LIERT

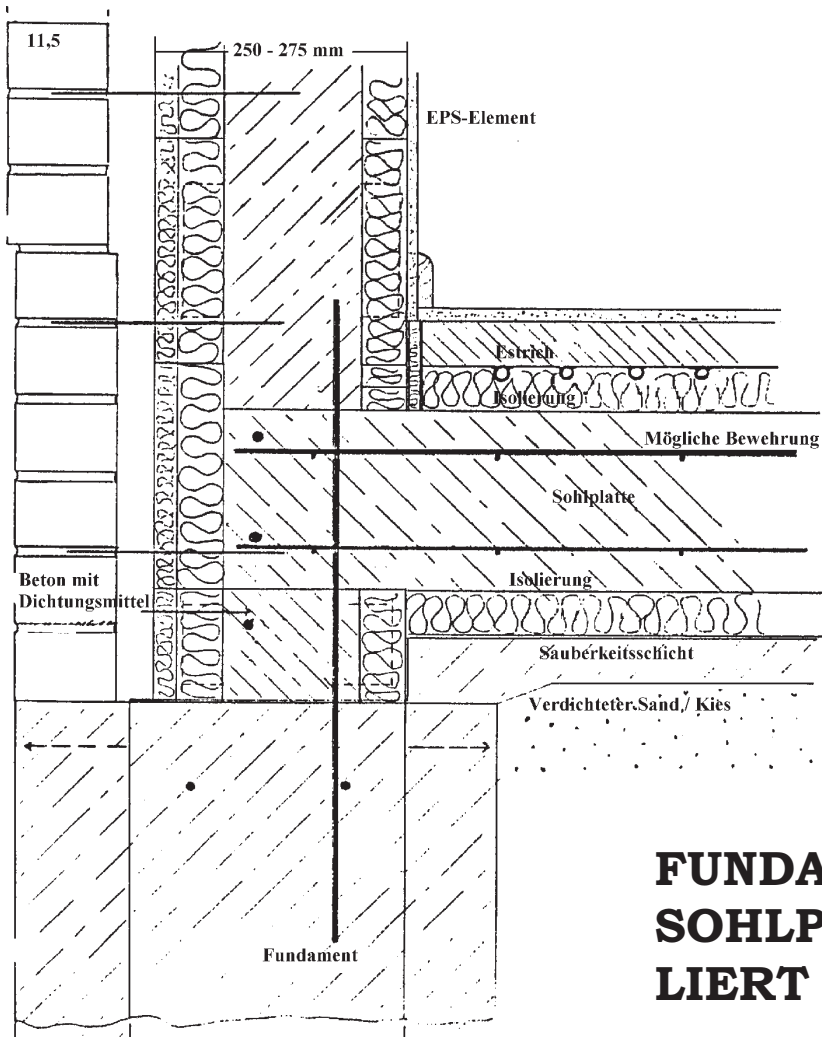


## TERRAINANSCHLUSS KG AUSGEBAUT

# STYREO STONE®

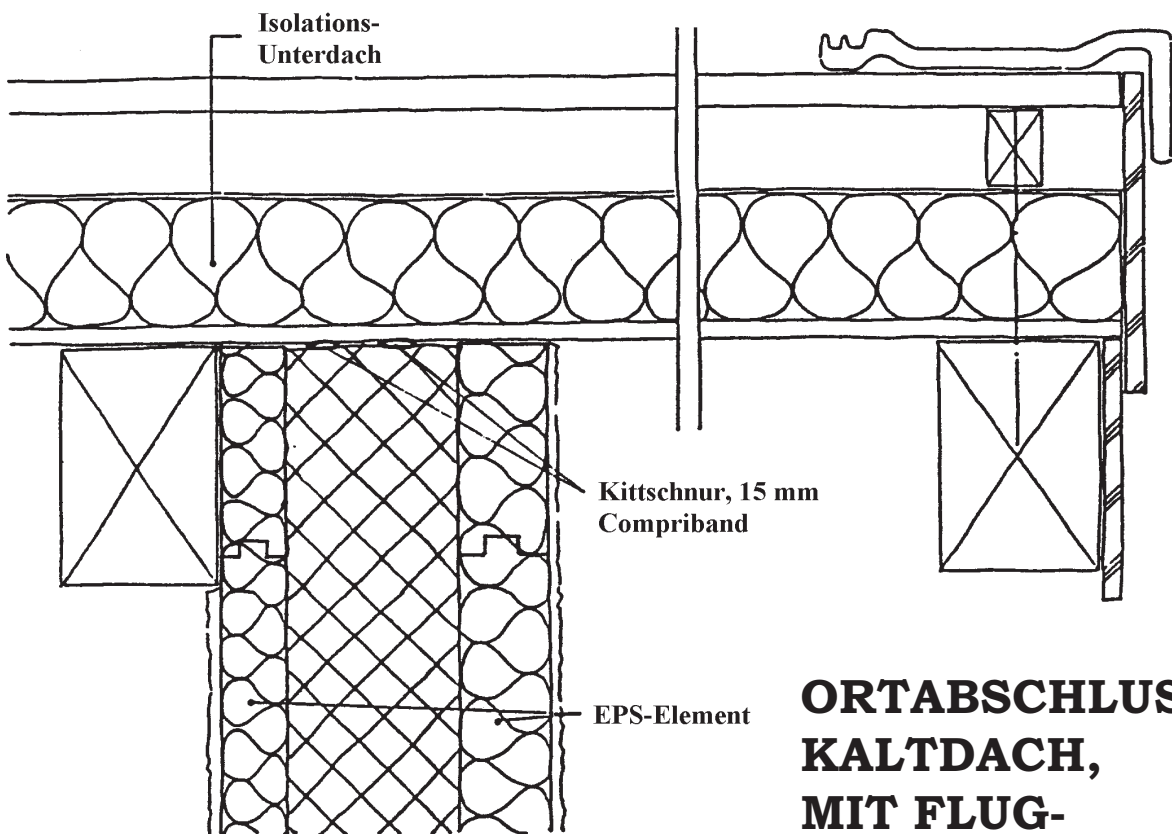
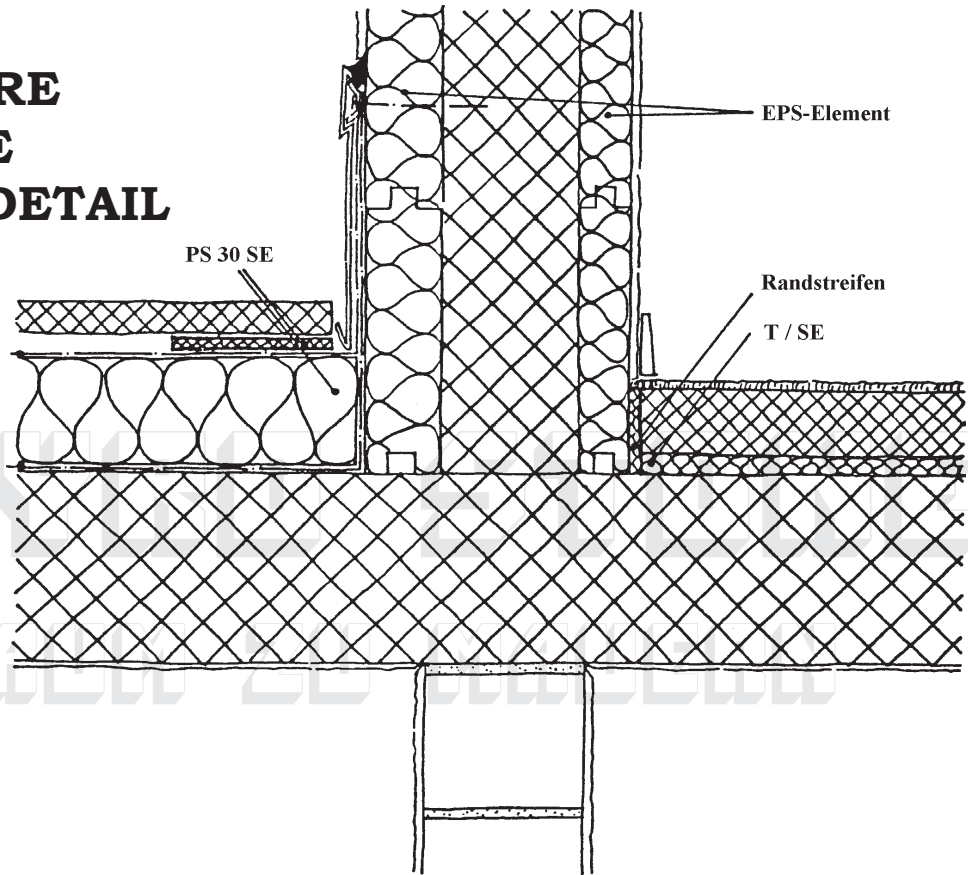


## TERRAINANSCHLUSS KG UNBEHEIZT, NACHISOLIERBAR



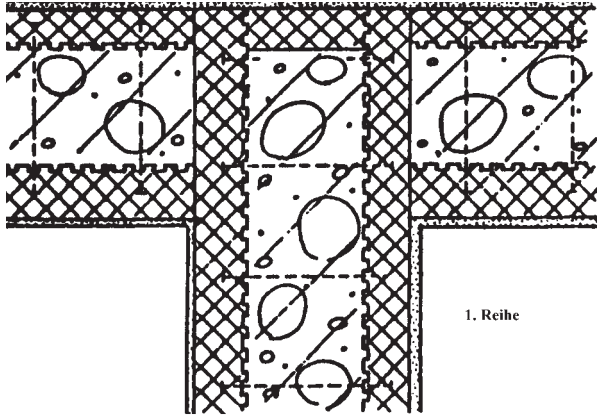
## FUNDAMENT - SOHLPLATTE ISO- LIERT

## BEGEHBARE TERRASSE ATTIKA - DETAIL

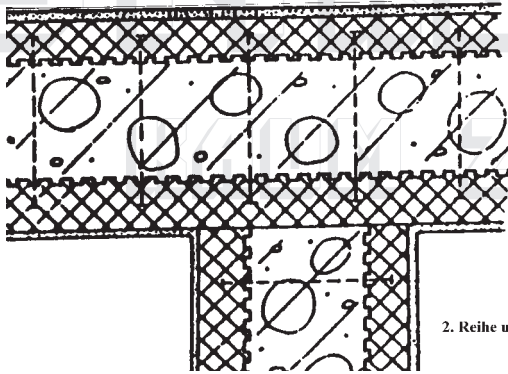


## ORTABSCHLUSS, KALTDACH, MIT FLUG- SPARREN

# STYREO STONE®

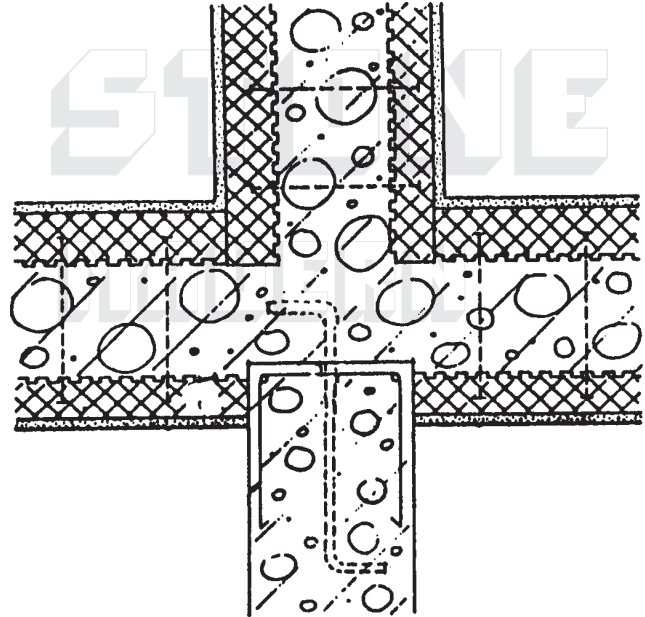


1. Reihe

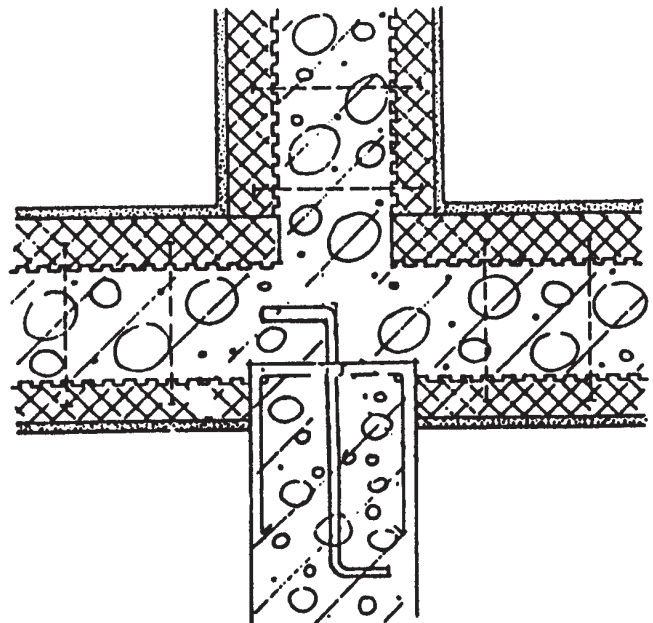


2. Reihe u.s.w.

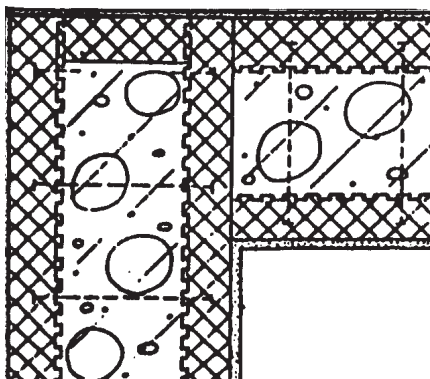
## WANDEINBINDUNG IM SYSTEM



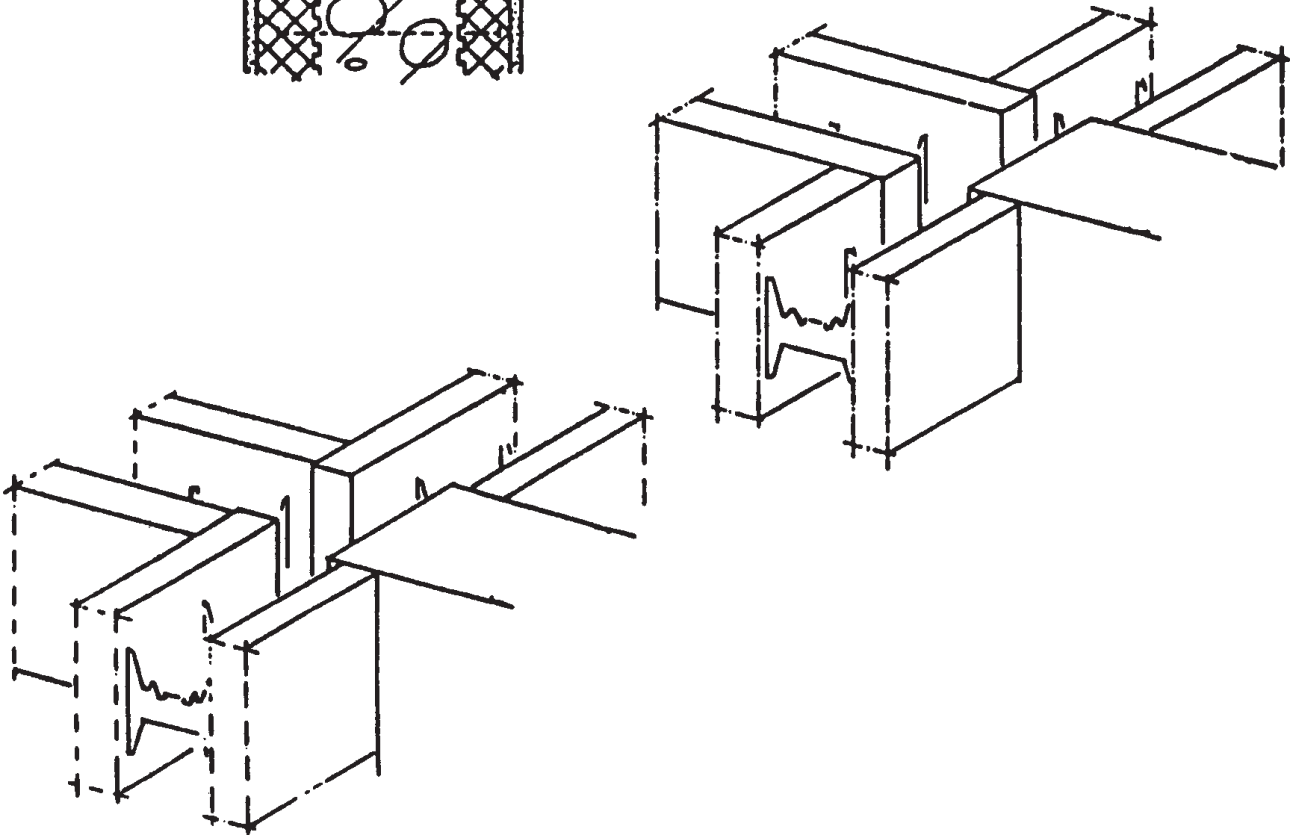
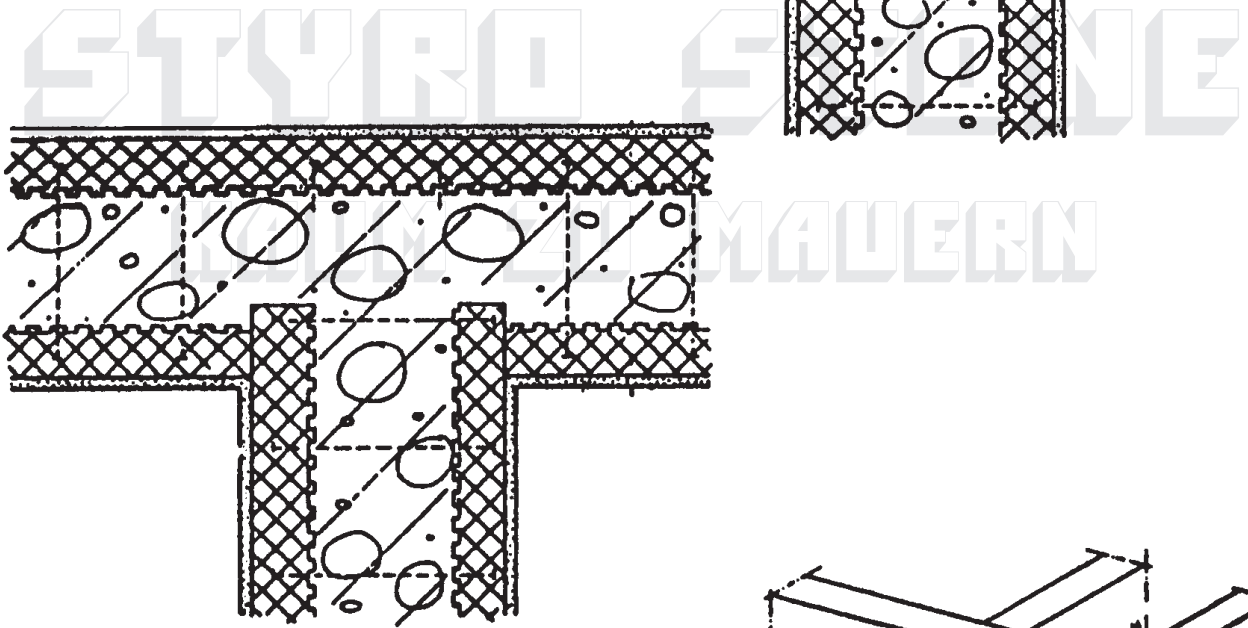
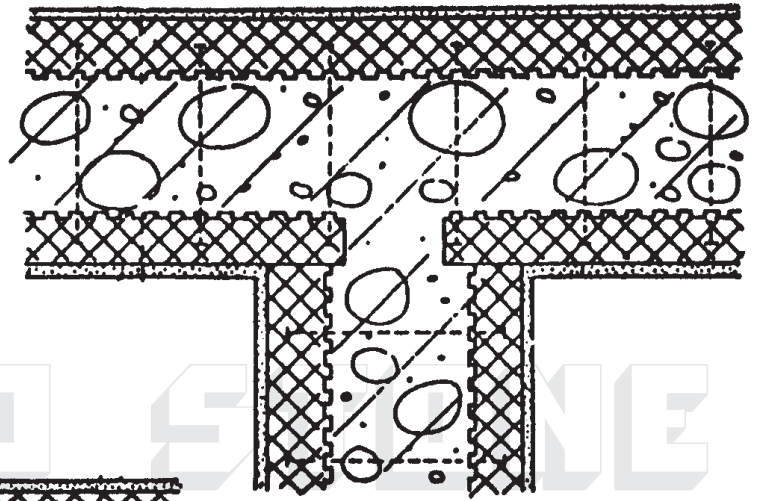
## WANDEINBINDUNG



## ECK-AUSBILDUNG



# STYRO STONE®



## BRANDWANDEINBINDUNG

Details 8



**(0)800 -**  
intern. freecall

**7**  
PRS

**8**  
TUV

**9**  
WXY

**7**  
PRS

**6**  
MNO

**7**  
PRS

**8**  
TUV

**6**  
MNO